



# Changes to Smoothness Specification

Eric Prieve,

CDOT Concrete & Physical Properties Program Manager

- New smoothness requirements will be implemented July 1, 2024.
- The majority of the specification remains unchanged. The key changes in the new specification include:
  - New lower smoothness targets and corrective work thresholds.
  - Categories change from I, II, III to A, B, C to make it clearer that the new specification is in place.
  - Design Bulletin revised to reflect the new categories
  - Incentives will be paid on final smoothness after ALL corrective work has been completed.
  - Diamond grinding requirements added to match pavement preservation diamond grinding requirements



# New lower smoothness targets

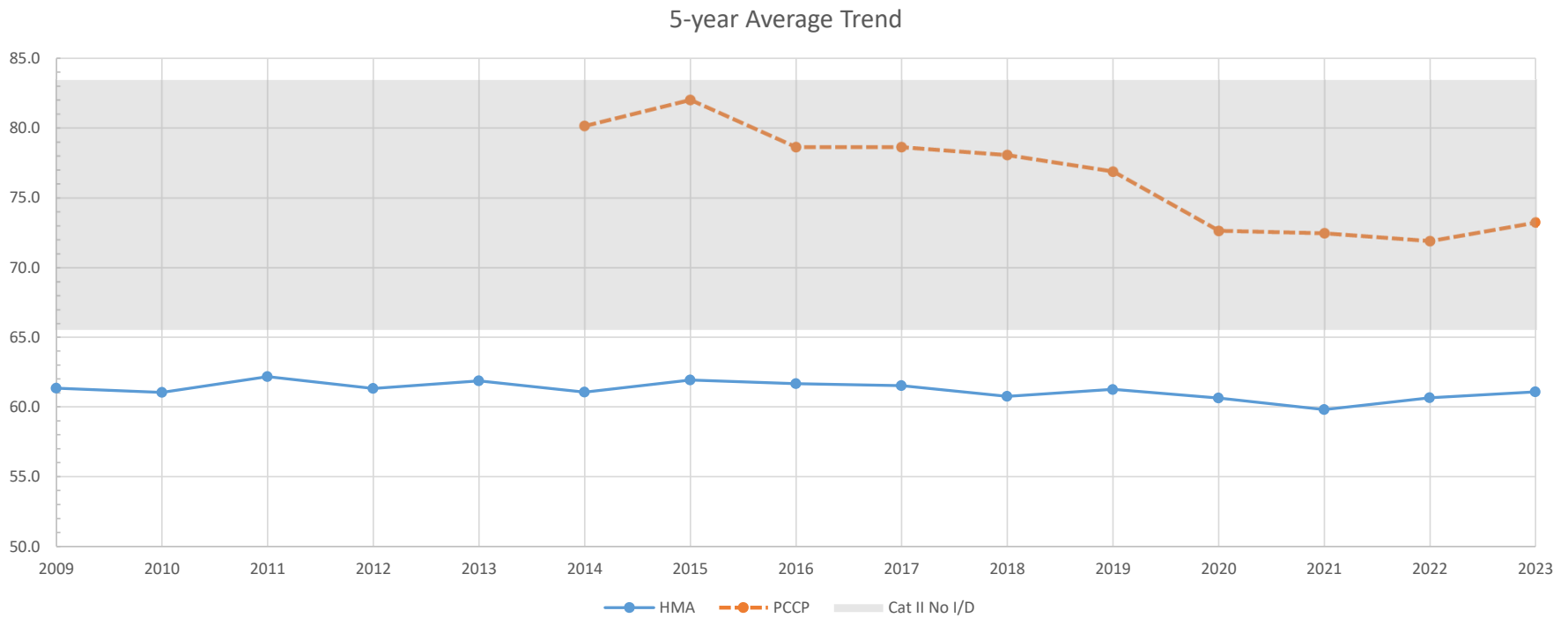
## New Targets

| <b>Pavement Smoothness Category</b> | <b>Maximum Incentive Payment (\$/sq.yd.)</b> | <b>Incentive Payment (\$/sq.yd.)</b>             | <b>No Incentive</b>      | <b>Corrective Work Required (0.10 mile sections)</b> |
|-------------------------------------|--|--|--------------------------|--|
| <b>A</b>                            | MRI ≤ 40.0<br>I = \$2.80                     | MRI > 40 and < 55.0<br>I=10.2670 – 0.1867*MRI    | MRI ≥ 55.0<br>and ≤ 70.0 | MRI > 70.0   |
| <b>B</b>                            | MRI ≤ 45.0<br>I = \$2.80                     | MRI > 45.0 and < 60.0<br>I=11.2000 – 0.1867*MRI  | MRI ≥ 60.0<br>and ≤ 75.0 | MRI > 75.0   |
| <b>C</b>                            | MRI ≤ 50.0<br>I = \$2.80                     | MRI > 50.0 and < 65.0<br>I= 12.1330 – 0.1867*MRI | MRI ≥ 65.0<br>and ≤ 80.0 | MRI > 80.0   |



# Smoothness Changes

## Why Change the Targets?



Minimal Improvement in 14 years



# Diamond Grinding Requirements

- Self propelled
- Minimum 17,000 lbs
- Minimum 3 ft wide grinding wheel
- Minimum 12 ft wheelbase
- Texturing tested to have a 0.05 inch average texture depth